

# Tolv Planters

Incorporate biophilic elements into interiors by pairing planters with seating ranges, or utilise independently to delineate distinct zones.

**Tolv Planters** mirror the customisable nature of the **Tolv** seating system, enabling personalised widths to suit precise needs.



With two height options and various finishes different looks can be created. Optional castors enables movement and reconfiguration in dynamic spaces.

sixteen3

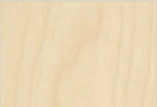


Tolv  
Planters

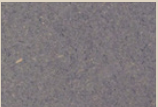


		
	Low Planter	High Planter
Product Code	TOLV-PLA-L	TOLV-PLA-H
Dimensions	W1200 x D350 x H875mm	W1200 x D350 x H1175mm

FINISHES:



Birch Plywood



Grey Valchromat



Black Valchromat



Natural Bamboo\*



Caramel Bamboo\*

\***Bamboo** finishes are on request.  
Please check availability before ordering.

CUSTOM SIZING

Planters can be modified to any width, up to **1200mm** wide.



CASTORS

Add castors to make planters  
mobile.  
Increases height by 40mm

NOTE: Planting not supplied.  
When live planting is used a waterproof membrane is required.

Planter internal dimensions: 1164 x D314 x H250mm

PRODUCT MATERIAL BREAKDOWN

Material Breakdown Data based on the Low **Tolv Planter** TOLV-PLA-L in Valchromat.

Figures stated will vary depending on model purchased and specification changes.

Recycled data based on supplier information and industry averages. As part of our continuous development processes we will review this information regularly and data may change without notice.



94%	VALCHROMAT
5%	MILD STEEL
<1%	ZINC PLATED MILD STEEL
<1%	POWDER COAT
<1%	PLASTIC

TOTAL WEIGHT: 46kg

52.6	KG CO2e
*calculations are based on average emission factors validated by third-party open data sources based on cradle-to-gate phases of typical product lifecycle.	

SUSTAINABILITY

2%	RECYCLED CONTENT
99%	RECYCLABLE

This product has been designed using high quality materials and craftsmanship to ensure it's longevity, however at the end of this products life it can be returned to **sixteen3** for refurbishment or recycling

.For FSC® Chain of Custody specify when ordering.



Certificate Number 14506



Full Membership Certificate No. 173

PRODUCT MATERIAL BREAKDOWN

Material Breakdown Data based on the Low **Tolv Planter** TOLV-PLA-L in Bamboo.

Figures stated will vary depending on model purchased and specification changes.

Recycled data based on supplier information and industry averages. As part of our continuous development processes we will review this information regularly and data may change without notice.



95%	BAMBOO
5%	MILD STEEL
<1%	ZINC PLATED MILD STEEL
<1%	POWDER COAT
<1%	PLASTIC

TOTAL WEIGHT: 50kg

28.9	KG CO2e
*calculations are based on average emission factors validated by third-party open data sources based on cradle-to-gate phases of typical product lifecycle.	

SUSTAINABILITY

2%	RECYCLED CONTENT
99%	RECYCLABLE

This product has been designed using high quality materials and craftsmanship to ensure it's longevity, however at the end of this products life it can be returned to **sixteen3** for refurbishment or recycling

.For FSC® Chain of Custody specify when ordering.



Certificate Number 14506



Full Membership Certificate No. 173

# Warranty Information

## 5 YEAR – NORMAL FAIR WEAR & TEAR

This includes the structure and any foam/padding materials.  
Fabrics are covered by fabric manufacturers' warranties, usually 5 years, dependant on fabric choice.

Please refer to full **sixteen3** Warranty information document for more details.  
**sixteen3** ltd reserve the right to update product data information without prior notice.

# Cleaning & Maintenance

## WOOD FINISHES

Clean surfaces regularly with a slightly damp cloth and buff dry with a soft duster. The finish on all wood and laminate surfaces is designed to withstand moderate heat and some spillages, but all spillages should be wiped off with a damp cloth straight away. Do not drag any objects across any surfaces.

Finishes may naturally change in appearance with age, and can vary from one batch to another.  
We cannot guarantee an exact match of any surface finishes.

## PLANTING

Plants are not supplied by sixteen3.

When live planting is used a waterproof membrane is required.  
These can usually be supplied by your planting specialist.

Planter internal dimensions: 1164 x D314 x H250mm



### CONTACT

+44 1925 850 500  
info@sixteen3.co.uk  
@sixteen3\_ltd

**HQ:**  
Unit 2, Westway21  
Chesford Grange  
Woolston, Warrington  
Cheshire  
WA1 4SZ

**London:**  
25 Bastwick St  
Clerkenwell  
London  
EC1V 3PS

**Manchester:**  
Material Source Studio  
1 Federation St  
NOMA  
Manchester  
M4 4BF

**Glasgow:**  
Material Source Studio  
180 West George St  
Glasgow  
G2 2NR

**sixteen3.co.uk**