

# Pop

A highly versatile upholstered stool and ottoman range, perfect for adding additional seating in flexible areas, or using in groups.

Sustainable timber frames with CME foam padding. Black plastic glides.








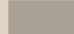



Pop



Pop



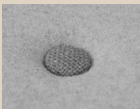
							
	<b>Small Round</b>	<b>Mid Round</b>	<b>Large Round</b>	<b>Small Square</b>	<b>Large Square</b>	<b>Small Rectangular</b>	<b>Large Rectangular</b>
<b>Product Code</b>	POP-01	POP-03	POP-04	POP-02	POP-05	POP-06	POP-07
<b>Dimensions</b>	H420 x Ø375mm	H420 x Ø525mm	H420 x Ø860mm	H420 x W400 x D400mm	H420 x W800 x D800mm	H420 x W800 x D400mm	H420 x W1200 x D400mm

CASTORS



Optional castors.

BUTTONING



Buttoned detail available.

HIGHER SEAT

Also available at Height of 480mm

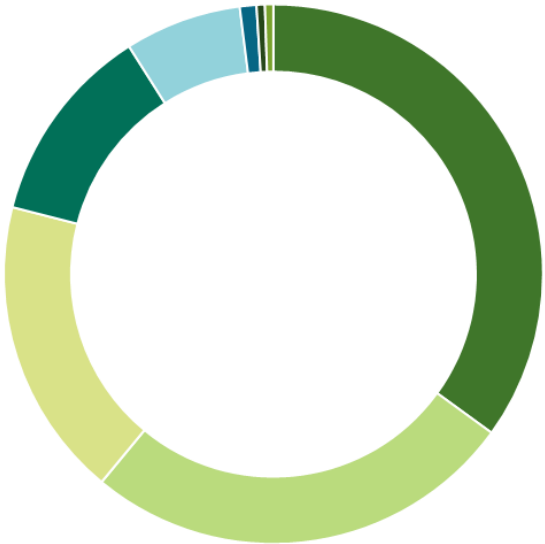


PRODUCT MATERIAL BREAKDOWN

Material Breakdown Data based on **Pop** Mid Round POP-03 upholstered in Camira Oceanic.

Figures stated will vary depending on model purchased and specification changes.

Recycled data based on supplier information and industry averages. As part of our continuous development processes we will review this information regularly and data may change without notice.



35%	PLYWOOD
26%	SOFTWOOD
18%	FIBREBOARD
12%	FABRIC
7%	POLYURETHANE FOAM
1%	ZINC PLATED MILD STEEL
<1%	LDPE
<1%	POLYPROPYLENE

TOTAL WEIGHT: 8.5kg

14.37	KG CO2e *calculations are based on average emission factors validated by third-party open data sources based on cradle-to-gate phases of typical product lifecycle.
-------	--

SUSTAINABILITY

30%	RECYCLED CONTENT
98%	RECYCLABLE

This product has been designed using high quality materials and craftsmanship to ensure it's longevity, however at the end of this products life it can be returned to **sixteen3** for refurbishment or recycling.

For FSC® Chain of Custody specify when ordering.



Warranty Information

5 YEAR – NORMAL FAIR WEAR & TEAR

This includes the structure and any foam/padding materials. Fabrics are covered by fabric manufacturers' warranties, usually 5 years, dependant on fabric choice.

Please refer to full **sixteen3** Warranty information document for more details. **sixteen3** ltd reserve the right to update product data information without prior notice.

Standards

FLAMABILITY

The foams & fillings of this product meet BS EN 5852: Part 2, in accordance with The Furniture and Furnishings (Fire) (Safety) Regulations 1988.

CONSTRUCTION

Designed to meet & exceed BS EN 16139: 2013 – Strength, Durability and Safety Requirements for non-domestic seating.

Cleaning & Maintenance

GENERAL MAINTENANCE

- Vacuum upholstery regularly to remove dust and grit.
- Most hard surfaces can be cleaned with a soft cloth, dampened with a small amount of water and buffed dry.
- Clean spills and stains quickly to prevent them setting in (see specific fabric care instructions below).
- If being used in a spill/stain prone area specify an appropriate finish with stain-repellent properties.

Refer to fabric manufacturers own guidelines for specific information.

NATURAL FABRICS

In addition to regular vacuuming, wool and other natura fibres can usually be cleaned using appropriate upholstery shampoo. For a deeper clean it is best that wool be dry cleaned, as over-wetting can cause shrinkage and appearance change. Never apply bleach, ammonia, alkali or strong acids to wool upholstery.

SYNTHETIC FABRICS

Vacuuming is the best regular maintenance followed by speed of action to remove spills and stains rapidly as soon as they occur. Most synthetic fabrics can be wiped down with a water soaked damp cloth without fear of damaging fibre or removing colour. Stubborn stains can be removed with a quality upholstery shampoo.

LEATHER

Leather should be regularly dusted with a soft cloth and vacuumed with a soft brush extension. Most types of aniline can also be treated with specialist products to help preserve colour/finish etc. As leather is a natural material, discrepancies in surface texture and 'puddling' in seat areas is to be expected.



**CONTACT**

+44 1925 850 500  
info@sixteen3.co.uk  
@sixteen3\_ltd

**HQ:**  
Unit 2, Westway21  
Chesford Grange  
Woolston, Warrington  
Cheshire  
WA1 4SZ

**London:**  
25 Bastwick St  
Clerkenwell  
London  
EC1V 3PS

**Manchester:**  
Material Source Studio  
1 Federation St  
NOMA  
Manchester  
M4 4BF