

Tuk



A side table which simply "Tuks" itself in. **Tuk** is a compact and versatile side table designed to integrate with most of our seating ranges. Perfect for a quick stop to jot some notes in a diary, type on laptop or just for resting a cup of coffee.

Upgrade a **Sedir** sofa by placing a **Tuk** between two seat sections, or elevate the functionality of Monsal benches by placing **Tuk** at the side. With six tabletop finishes and twenty four metal colours to choose from, **Tuk** can effortlessly blend in or playfully contrast with any range you choose to integrate it with.

sixteen3



Product Code

TUK-xx

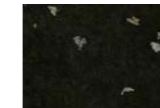
Dimensions

W300 x D500
x H650mm

Tuk tables are fixed onto the sides of soft seating ranges through the upholstery and can be incorporated into the following ranges:

Sedir, Fuse 2, Tolv, Monsal, Army Lite, Pop.

TABLE TOP FINISH:



When ordering please specify by replacing 'xx' with tabletop code.

Smile Plastic Charcoal
+SPC



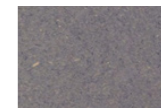
Birch Plywood
+P



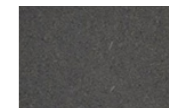
Natural Bamboo
+NB



Caramel Bamboo
+CB



Grey Valchromat
+GV



Black Valchromat
+BV

METAL COLUMN FINISH:



Wine Red
RAL 3005



Ruby Red
RAL 3003



Beige Red
RAL 3012



Broom Yellow
RAL 1032



Zinc Yellow
RAL 1018



Oyster White
RAL 1013



Steel Blue
RAL 5011



Sapphire Blue
RAL 5003



Pigeon Blue
RAL 5014



Blue Grey
RAL 7031



Signal White
RAL 9003



Pebble Grey
RAL 7032



Grey Beige
RAL 1019



Yellow Grey
RAL 7034



Fir Green
RAL 6009



Moss Green
RAL 6005



Reseda Green
RAL 6011



Cement Grey
RAL 7033



Light Grey
RAL 7035



Graphite Grey
RAL 7024



Jet Black
RAL 9005



Quartz
PREMIUM



Graphite Grey
PREMIUM



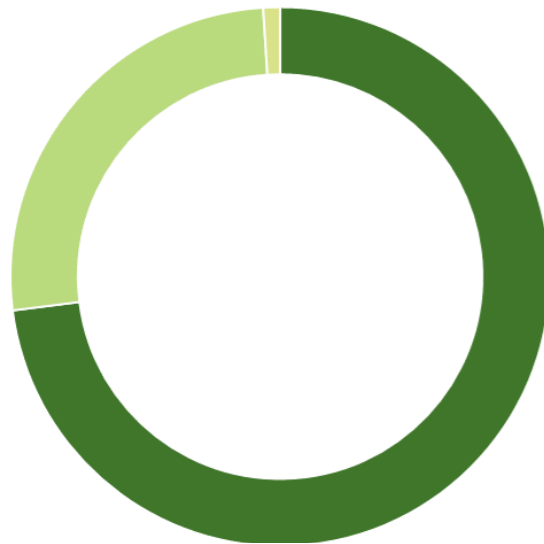
Jet Black
PREMIUM

On small orders a minimum charge may apply.

PRODUCT MATERIAL BREAKDOWN

Material Breakdown Data based on Tuk with Smile Plastic top.

Recycled data based on supplier information and industry averages. As part of our continuous development processes we will review this information regularly and data may change without notice.



73%	MILD STEEL
26%	RECYCLED PLASTIC
1%	POWDER COAT

TOTAL WEIGHT: 3.5kg

SUSTAINABILITY

67%	RECYCLED CONTENT
99%	RECYCLABLE

This product has been designed using high quality materials and craftsmanship to ensure its longevity, however at the end of this products life it can be returned to **sixteen3** for refurbishment or recycling.

Warranty Information

5 YEAR – NORMAL FAIR WEAR & TEAR

This includes the structure and any foam/padding materials. Fabrics are covered by fabric manufacturers' warranties, usually 5 years, dependant on fabric choice.

Please refer to full **sixteen3** Warranty information document for more details. **sixteen3** ltd reserve the right to update product data information without prior notice.

Standards

CONSTRUCTION

Designed to meet & exceed BS EN 15372: 2013 – Strength, Durability and Safety Requirements for non-domestic tables.

Cleaning & Maintenance

GENERAL MAINTENANCE

- Most hard surfaces can be cleaned with a soft cloth, dampened with a small amount of water and buffed dry.
- Clean spills and drips quickly to prevent them marking.
- Never drag any objects across tabletop surfaces as these can leave surface scratches.
- Although tabletop surfaces are resistant to a degree of heat & liquids, we would always recommend the use of coasters as an additional protection.
- Bolts should be checked and tightened periodically to reduce wear.

WOOD FINISHES

Clean surfaces regularly with a slightly damp cloth and buff dry with a soft duster. The finish on all wood and laminate surfaces is designed to withstand moderate heat and some spillages, but all spillages should be wiped off with a damp cloth straight away. Do not drag any objects across any table tops. Certain wood finishes will naturally change in appearance with age. We cannot guarantee an exact match of any timber products.

POWDER COATED & PAINTED

Clean surfaces regularly with a slightly damp cloth and a mild solution of soapy water. Buff dry with a soft duster.

Finishes may naturally change in appearance with age. We cannot guarantee an exact match of any surface finishes..



CONTACT

+44 1925 850 500
info@sixteen3.co.uk
@sixteen3_ltd

HQ:
Unit 2, Westway21
Chesford Grange
Woolston, Warrington
Cheshire
WA1 4SZ

London:
25 Bastwick St
Clerkenwell
London
EC1V 3PS

Manchester:
Material Source Studio
1 Federation St
NOMA
Manchester
M4 4BF