

Hex

Taking its visual cues from nature, distilled into geometric simplicity, the Hex range can take on numerous environments. Can be used individually as additional flexible seating with a twist, or used in groups to provide larger landscapes. Combining the different heights creates environments influenced by the rock formations of the Giant's Causeway.

Hardwood and plywood frames with CME foam padding.

Plastic glides or powder coated steel pedestal bases.










Hex



Hex



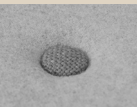
							
Product Code	Single Low HEX-O1L	Single Mid HEX-O1M	Single High HEX-O1H	Single Low Pedestal HEX-O1LP	Single Mid Pedestal HEX-O1MP	Double Low HEX-O2L	Double Mid HEX-O2M
Dimensions	H380 x W530 x D460mm	H480 x W530 x D460mm	H580 x W530 x D460mm	H380 x W530 x D460mm	H480 x W530 x D460mm	H380 x W1030 x D460mm	H480 x W1030 x D460mm

TABLES



Matching tables available.

BUTTONING



Buttoned detail available.

FINISHES

STANDARD POWDER COAT COLOURS:

Signal White
RAL 9003

Oyster White
RAL 1013

Light Grey
RAL 7035

Graphite Grey
RAL 7024

Jet Black
RAL 9005

Zinc Yellow
RAL 1018

Beige Red
RAL 3012

Ruby Red
RAL 3003

Moss Green
RAL 6005

Reseda Green
RAL 6011

Sapphire Blue
RAL 5003

Pigeon Blue
RAL 5014

PREMIUM POWDER COAT COLOURS:

Quartz

Golden Brown

Rust Mica

On small orders a minimum charge may apply.

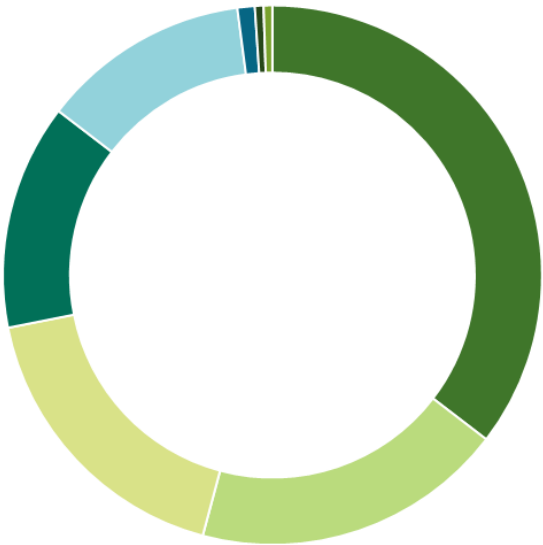


PRODUCT MATERIAL BREAKDOWN

Material Breakdown Data based on **Hex** HEX-01M upholstered in Camira Oceanic.

Figures stated will vary depending on model purchased and specification changes.

Recycled data based on supplier information and industry averages. As part of our continuous development processes we will review this information regularly and data may change without notice.



34%	PLYWOOD
18%	SOFTWOOD
17%	POLYURETHANE FOAM
13%	FIBREBOARD
12%	FABRIC
<1%	ZINC PLATED MILD STEEL
<1%	LDPE
<1%	POLYPROPYLENE

TOTAL WEIGHT: 6kg

SUSTAINABILITY

25%	RECYCLED CONTENT
94%	RECYCLABLE

This product has been designed using high quality materials and craftsmanship to ensure it's longevity, however at the end of this products life it can be returned to **sixteen3** for refurbishment or recycling.

Warranty Information

5 YEAR – NORMAL FAIR WEAR & TEAR

This includes the structure and any foam/padding materials.
Fabrics are covered by fabric manufacturers' warranties, usually 5 years, dependant on fabric choice.

Please refer to full **sixteen3** Warranty information document for more details.
sixteen3 ltd reserve the right to update product data information without prior notice.

Standards

FLAMABILITY

The foams & fillings of this product meet BS EN 5852: Part 2, in accordamce with The Furniture and Furnishings (Fire) (Safety) Regulations 1988.

CONSTRUCTION

Designed to meet & exceed BS EN 16139: 2013 – Strength, Durability and Safety Requirements for non-domestic seating.

Cleaning & Maintenance

GENERAL MAINTENANCE

- Vacuum upholstery regularly to remove dust and grit.
- Most hard surfaces can be cleaned with a soft cloth, dampened with a small amount of water and buffed dry.
- Clean spills and stains quickly to prevent them setting in (see specific fabric care instructions below).
- If being used in a spill/stain prone area specify an appropriate finish with stain-repellent properties.

Refer to fabric manufacturers own guidelines for specific information.

NATURAL FABRICS

In addition to regular vacuuming, wool and other natura fibres can usually be cleaned using appropriate upholstery shampoo. For a deeper clean it is best that wool be dry cleaned, as over-wetting can cause shrinkage and appearance change. Never apply bleach, ammonia, alkali or strong acids to wool upholstery.

SYNTHETIC FABRICS

Vacuuming is the best regular maintenance followed by speed of action to remove spills and stains rapidly as soon as they occur. Most synthetic fabrics can be wiped down with a water soaked damp cloth without fear of damaging fibre or removing colour. Stubborn stains can be removed with a quality upholstery shampoo.

LEATHER

Leather should be regularly dusted with a soft cloth and vacuumed with a soft brush extension.
Most types of aniline can also be treated with specialist products to help preserve colour/finish etc.
As leather is a natural material, discrepancies in surface texture and 'puddling' in seat areas is to be expected.

POWDER COATED & PAINTED

Clean surfaces regularly with a slightly damp cloth and a mild solution of soapy water. Buff dry with a soft duster.



CONTACT

+44 1925 850 500
info@sixteen3.co.uk
@sixteen3_ltd

HQ:
Unit 2, Westway21
Chesford Grange
Woolston, Warrington
Cheshire
WA1 4SZ

London:
25 Bastwick St
Clerkenwell
London
EC1V 3PS

Manchester:
Material Source Studio
1 Federation St
NOMA
Manchester
M4 4BF

sixteen3.co.uk